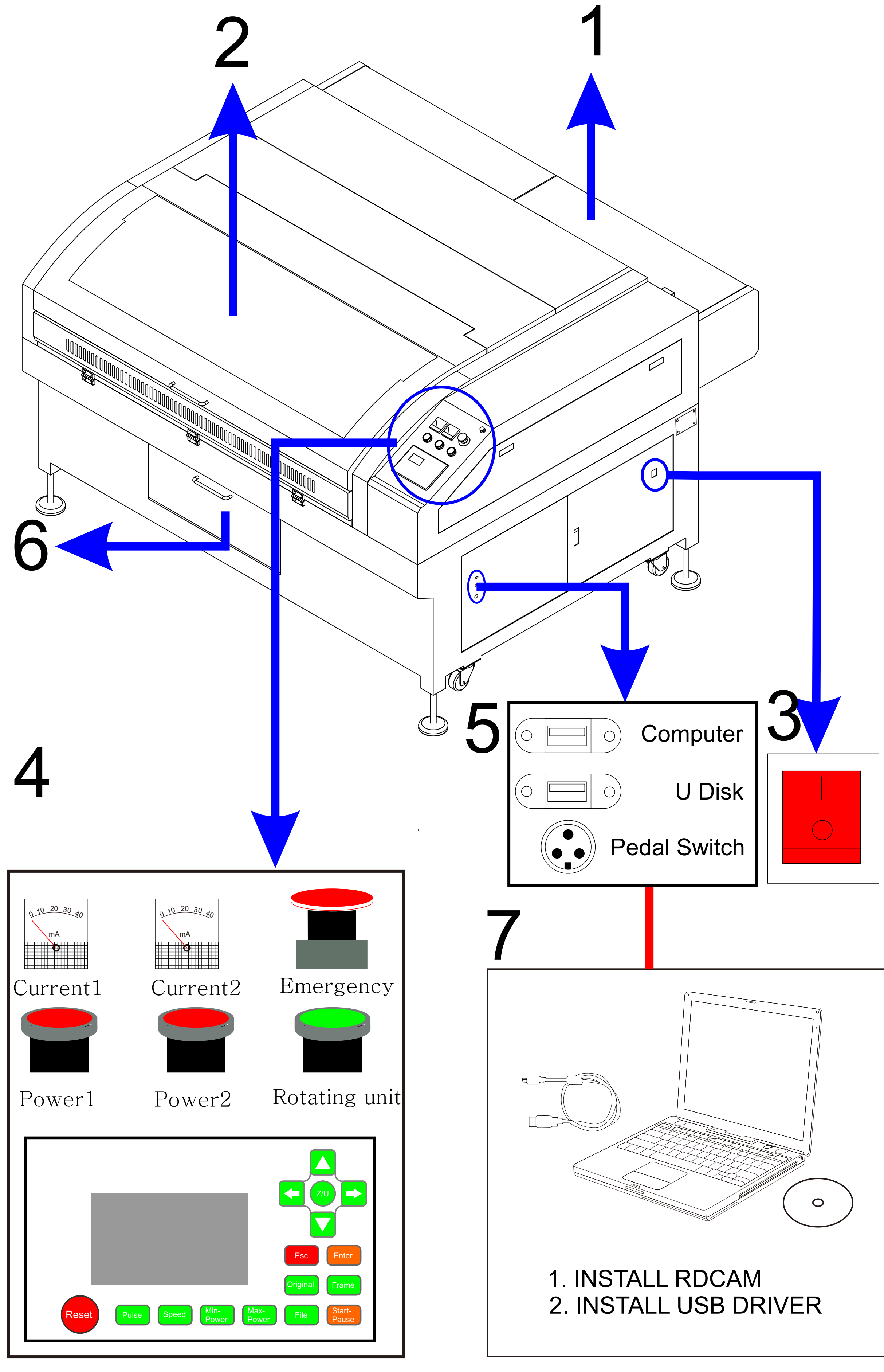


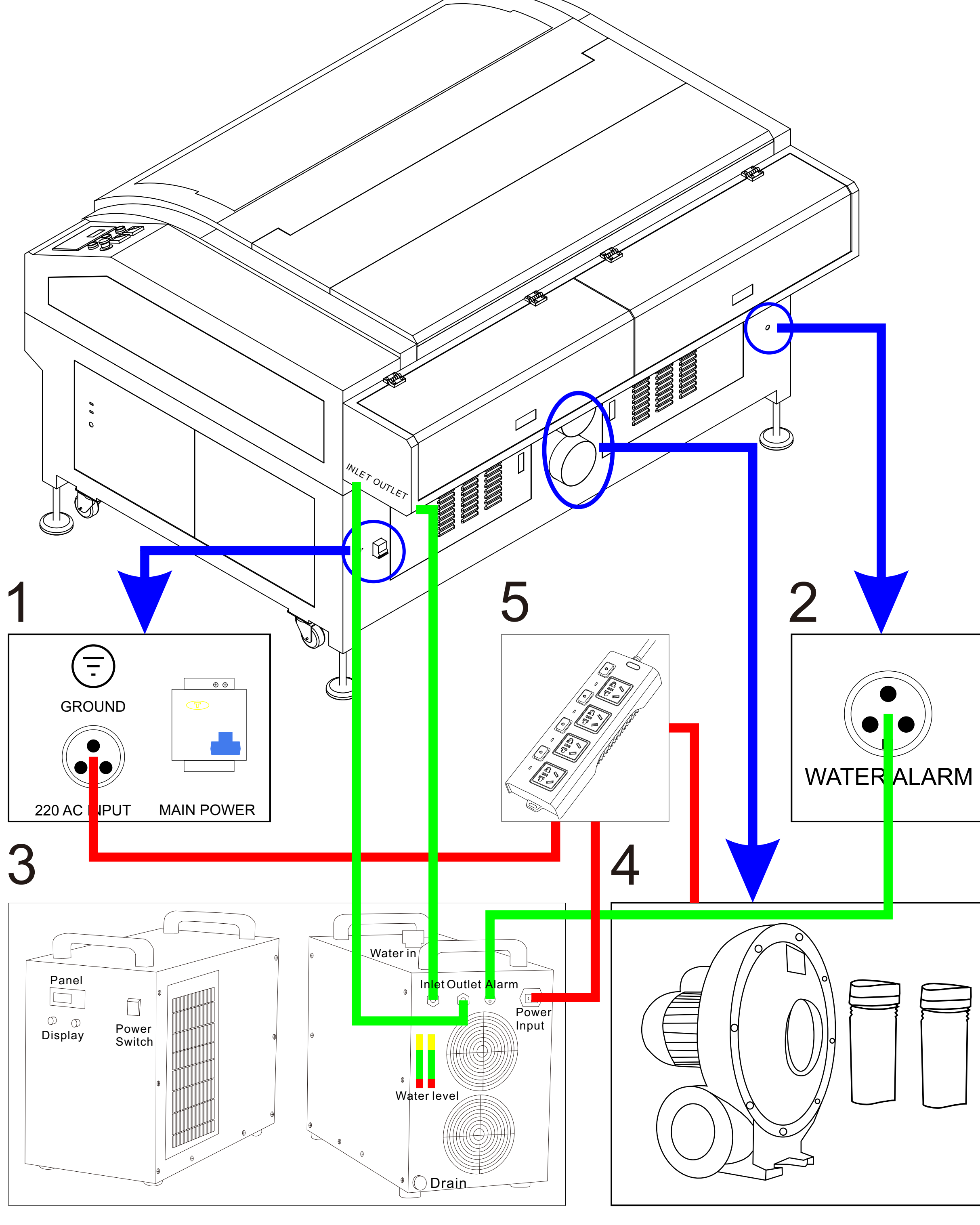
# Cm1309

## Front Layout

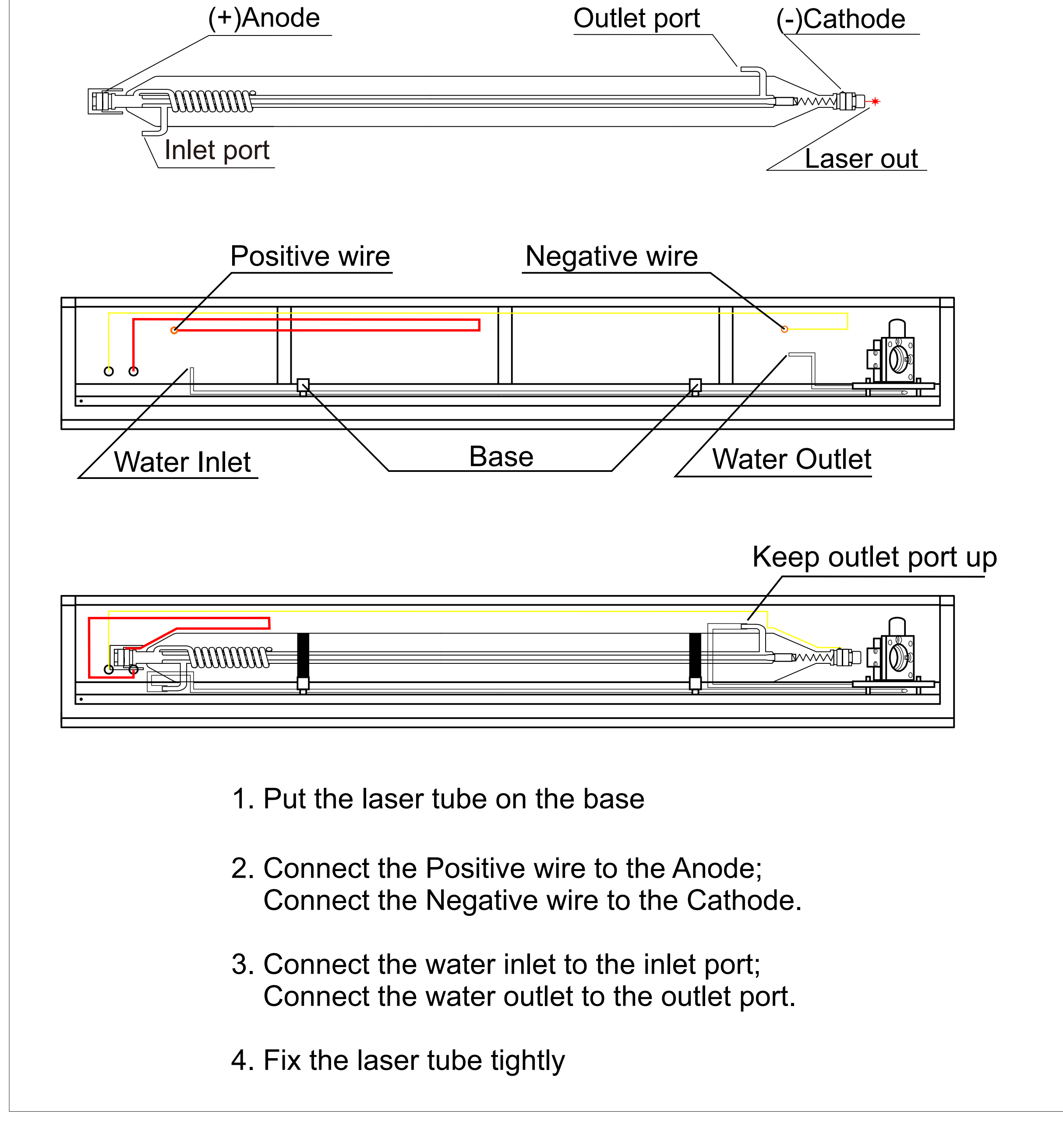


ITEM	DESCREPTION
1: Laser Tube Box	Install laser tube inside the box
2.Door Cover	When machine start to work, you should close the door to avoid exposure-visible and/or invisible laser radiation inside, generally, the cover equipped with a protection switch, once open the door, machine will stop and alarm
3.Power Switch	Power on/off machine
4. Panel	Current1/2: Display power value, 2 for double head Power1/2: 220V switch for laser power supply board, 2 for double head Emergency: Emergency stop button Rotating Unit: Switch to rotation mode Panel Screen: Setting, operation and display
5. Communication Port	Pedal switch: Optional function(default no) U Disk: For U disk copying file Computer: Transfer data from computer directly
6.Drawer	Take small end product or wastage from drawer
8. Software	Insatall RDCAM, USB driver

## Rear Layout



## 6 Install laser tube



ITEM	DESCREPTION
1: Power input	Main power: Air switch, once short circuit, auto protection AC 220V Input: Connect to 220V socket Ground: Earth end
2.Water alarm	Connect to 3(Water chiller) alarm port
3.Water Chiller	Water chiller connects to laser tube, inlet of the chiller connects to outlet in machine side, outlet of the chiller connects to inlet in machine side, alarm port connects to 2 in machine side(water alarm)
4. Exhaust Fan	Exhaust gas out
5.AC 220V Socket	AC220V power supply to machine, water chiller, exhaust fan
6. Laser tube	Install laser tube, please refer to 6 step by step

## Operation Process

- Install laser tube, pleaser refer to 6
- Connect the chiller to the laser tube, fill water into the chiller, connect water alarm cable between machine and water chiller
- Connect the exhaust fan to the machine
- Connect AC 220V power to water chiller, machine and exhaust fan
- Power on the water chiller, make sure water full of the tube, then power on the machine
- Calibrating the laser beam(Please refer to the beam adjust manual)
- Install the software to the PC(Support Win Xp, Win7-64bit, Win8-64Bit)
- Connect USB cable between machine and PC
- Open RDCAM, make a design, setting parameters, transfer data to machine
- Put the material on the table, manual adjust the focus length to 8mm, then start to work